

CEILING FIXTURES

Features

Housing: Die-form Cold-rolled Steel

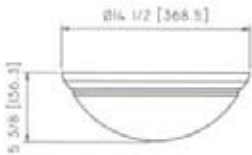
Shade: Glass

Ballast: 120V 60 Hz, Electronic Ballast

Lamp: 2700K, CRI 80

Efficacy: Meet California 2005 Title 24 Standard

Certification: UL, cUL, Energy Star



Order Code	Model	Finish	Shade	Power Factor	Lamp	Energy Star
2x18W Quad						
212050	1015PL-01	Polished Brass	Frosted Glass	Middle Power Factor	18W Quad, X 2	●
212051	1015PL-06	White	Frosted Glass	Middle Power Factor	18W Quad, X 2	●
212190	1015PL-01HPF	Polished Brass	Frosted Glass	High Power Factor	18W Quad, X 2	●
212191	1015PL-06HPF	White	Frosted Glass	High Power Factor	18W Quad, X 2	●
212060	1029PL-01	Polished Brass	Frosted Swirl Glass	Middle Power Factor	18W Quad, X 2	●
212061	1029PL-06	White	Frosted Swirl Glass	Middle Power Factor	18W Quad, X 2	●
212200	1029PL-01HPF	Polished Brass	Frosted Swirl Glass	High Power Factor	18W Quad, X 2	●
212201	1029PL-06HPF	White	Frosted Swirl Glass	High Power Factor	18W Quad, X 2	●
212078	1132PL-06	White	Alabaster Glass	Middle Power Factor	18W Quad, X 2	●
212074	1132PL-30	Oil Ribbed Bronze	Alabaster Glass	Middle Power Factor	18W Quad, X 2	●
212073	1132PL-62	Satin Nickel	Alabaster Glass	Middle Power Factor	18W Quad, X 2	●
2x13W Quad						
212053	1015PL-213-01	Polished Brass	Frosted Glass	Middle Power Factor	13W Quad, X 2	●
212052	1015PL-213-06	White	Frosted Glass	Middle Power Factor	13W Quad, X 2	●
212075	1132PL-213-06	White	Alabaster Glass	Middle Power Factor	13W Quad, X 2	●
212076	1132PL-213-30	Oil Ribbed Bronze	Alabaster Glass	Middle Power Factor	13W Quad, X 2	●
212077	1132PL-213-62	Satin Nickel	Alabaster Glass	Middle Power Factor	13W Quad, X 2	●
1x22W Circline						
212010	1015FL-01	Polished Brass	Frosted Glass	Middle Power Factor	22W Circline	●
212011	1015FL-06	White	Frosted Glass	Middle Power Factor	22W Circline	●
212020	1029FL-01	Polished Brass	Frosted Swirl Glass	Middle Power Factor	22W Circline	●
212021	1029FL-06	White	Frosted Swirl Glass	Middle Power Factor	22W Circline	●
212043	1132FL-62	Satin Nickel	Alabaster Glass	Middle Power Factor	22W Circline	●
212042	1132FL-24	Polished Brass	Alabaster Glass	Middle Power Factor	22W Circline	●

USA & CANADA

1-800-445-6611

FAX WATS 1-800-445-6690



PHOENIX, AZ

Phone: 602-268-0001

Fax: 602-268-0130

Visit us online at: www.lightingparts.com

E-mail us at: customerservice@lightingparts.com

CEILING FIXTURES

Features

Housing: Die-form Cold-rolled Steel
Shade: Acrylic
Ballast: 120V 60 Hz, Electronic Ballast
Efficacy: Meet California 2005 Title 24 Standard
Certification: UL, cUL, Energy Star



DC014/DC016/DC018

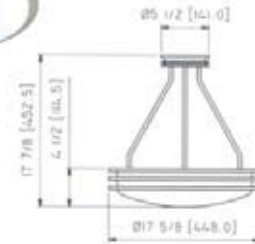


DC019/DC020/DC034

Order Code	Model	Finish	Size		Lamp	Energy Star
			Dia.	H		
212091	DC014-213	Satin Nickel	14.0"	4.0"	13W Quad x 2	●
212092	DC014-218	Satin Nickel	14.0"	4.0"	18W Quad x 2	●
212093	DC014-132	Satin Nickel	14.0"	4.0"	32W Circline	●
212100	DC016	Satin Nickel	16.0"	4.4"	32W Circline	●
212110	DC018-2232	Satin Nickel	18.0"	4.4"	22W+32W Circline	●
212111	DC018-226	Satin Nickel	18.0"	4.4"	26W Quad x 2	●
212120	DC019	Satin Nickel	19.5"	4.8"	32W+40W Circline	●
212130	DC020	Satin Nickel	16.5"	4.8"	22W+32W Circline	●
212123	DC034	Satin Nickel	14.0"	4.6"	32W Circline	●
212152	DC028	Satin Nickel	-	-	17W T8 x 3	●
212150	DC032	Satin Nickel	-	-	32W Circline x 2	●
212310	DC024	Satin Nickel	17-5/8"	4-1/2"	22W+32W Circline	●
212311	DC050	Satin Nickel	17-5/8"	17-7/8"	22W+32W Circline	●
212080	8413A	White Acrylic	16.0"	4.6"	32W Circline	●
212081	8413B	White Acrylic	18.6"	5.0"	40W Circline	●
212160	2-0131-122	White Acrylic	13.0"	4.0"	22W Circline	●
212161	2-0131-213	White Acrylic	13.0"	4.0"	13W Quad x 2	●
212410	2-0245	White Acrylic	11.0"	4.3"	22W Circline	●
212170	2-0246	White Acrylic	16.0"	4.3"	32W Circline	●
212171	2-0246-213	White Acrylic	16.0"	4.3"	13W Quad x 2	●
212180	2-0247	White Acrylic	18.8"	5.3"	22W+32W Circline	●



DC50 Pendant / DC024



DC028/DC032



8413A/8413B



2-0131



2-0245/2-0246/2-0247

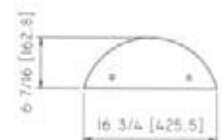
FLUSH MOUNT

Features

Housing: Die-formed cold roll steel
Shade: Acrylic
Ballast: 120V 60 Hz, Electronic Ballast
Efficacy: Meet California 2005 Title 24 Standard
Certification: UL, cUL, Energy Star



FL1224/1248



Order Code	Model	End Cap Finish	Lamp	Length	Energy Star
213030	FL1224	Metal, Satin Nickel	17WT8x3	24"	●
213040	FL1248	Metal, Satin Nickel	32WT8x3	48"	●

USA & CANADA

1-800-445-6611

FAX WATS 1-800-445-6690

Visit us online at: www.lightingparts.com

O.E.M. SUPPLIES, INC.

PHOENIX, AZ

Phone: 602-268-0001

Fax: 602-268-0130

E-mail us at: customerservice@lightingparts.com

VANITY

Features

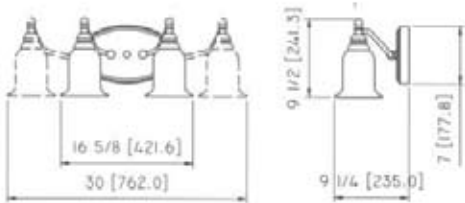
Housing: Die-formed cold roll steel

Shade: Alabaster Glass Diffuser

Ballast: 120V 60 Hz, Electronic Ballast

Efficacy: Meet California 2005 Title 24 Standard

Certification: UL, cUL, Energy Star



Order Code	Model	Finish	Lamp	Energy Star
213070	4472-02	Satin Nickel	13W Triple x 2	●
213071	4472-04	Satin Nickel	13W Triple x 4	●



4472-02



4472-04

Features

Housing: Die-formed cold roll steel

Shade: Acrylic

Ballast: 120V 60 Hz, Electronic Ballast

Efficacy: Meet California 2005 Title 24 Standard

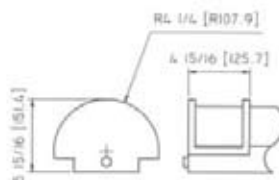
Certification: UL, cUL Listed, Energy Star

Order Code	Model	End Cap Finish	Lamp	Length	Energy Star
213010	3-0115SE	Plastic, Silver Color	13W Quad x 2	12"	●
213020	3-0215SE	Plastic, Silver Color	18W Quad x 2	18"	●
213021	3-0315SE	Plastic, Silver Color	17W T8 x 2	24"	●
213080	3-0115HPF	Plastic, Silver Color	13W Quad x 2	12"	●
213081	3-0215HPF	Plastic, Silver Color	18W Quad x 2	18"	●
213050	FL2103	Metal, Satin Nickel	17W T8	24-7/8"	●
213051	FL2103-217	Metal, Satin Nickel	17W T8 x 2	24-7/8"	●
213060	FL2106	Metal, Satin Nickel	32 W T8	48-7/8"	●
213061	FL2106-232	Metal, Satin Nickel	32 W T8 x 2	48-7/8"	●
213065	FL2124	Metal, Satin Nickel	17 W T8 x 2	24-7/8"	●
213066	FL1036	Metal, Satin Nickel	25W T8 x 2	36-7/8"	●
213067	FL2048	Metal, Satin Nickel	32 W T8 x 2	48-7/8"	●

HPF : High Power Factor



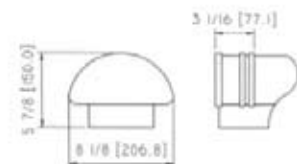
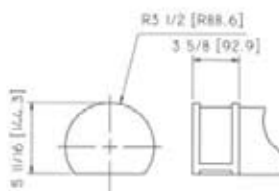
FL2103/2106



3-0115/0215/0315



FL2124/1036/2048



USA & CANADA

1-800-445-6611

FAX WATS 1-800-445-6690

Visit us online at: www.lightingparts.com


O.E.M. SUPPLIES, INC.

PHOENIX, AZ

Phone: 602-268-0001

Fax: 602-268-0130

E-mail us at: customerservice@lightingparts.com

STRIPS

Features

Housing: Die-form Cold-rolled Steel,
Powder Coated Finish

Ballast: 120V 60Hz, Electronic Ballast

Efficacy: Meet California 2005 Title 24 Standard

Certification: UL, cUL, Energy Star

Order Code	Model	Dimension L x W x H	Lamp	Energy Star
219410	600ST	48"x4-1/4"x3-1/4"	32W T8 x 2	●
219420	610ST	24-1/4"x4-3/8"x3-3/8"	17W T8 x 2	●
219430	650ST	21-1/8"x2-1/4"x1-1/4"	13W T5 x 2	
219440	660ST	34-1/4"x2-1/2"x2-3/16"	21W T5 x 2	
219450	670ST	46-1/16"x2-1/2"x2-3/16"	28W T5 x 2	



HIGH BAY FIXTURES

Features

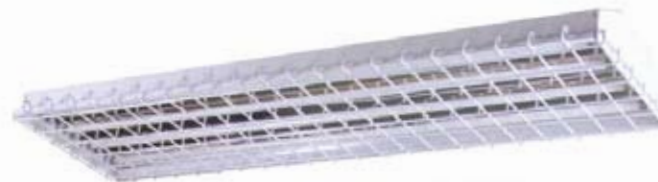
- Ideal for Both High and Low Bay Applications
- Precision Formed Reflector to Achieve Maximum Light Output
- Pendant Chain Mounting
- Supplied with Wire Guard

Housing: Die-form Cold-rolled Steel
Powder Coated Finish

Ballast: Universal Input Electronic Ballast

Certification: UL, cUL

Order Code	Model	Voltage Wattage	Lamp
218050	HB-4T5	120-277V, 220W	54W T5 HO x 4
218060	HB-4T8	120-277V, 160W	32W T8 HO x 4
218110	HB-6T5	120-277V, 330W	54W T5 HO x 6
218120	HB-6T8	120-277V, 240W	32W T8 HO x 6



USA & CANADA

1-800-445-6611

FAX WATS 1-800-445-6690


O.E.M. SUPPLIES, INC.

PHOENIX, AZ

Phone: 602-268-0001

Fax: 602-268-0130

Visit us online at: www.lightingparts.com

E-mail us at: customerservice@lightingparts.com

FLUORESCENT FIXTURES

WRAPAROUND FIXTURES

**24" Wraparound
RL-WA2AS**

Size: 24" x 6.5" x 2.2"
Bulb Type: 17W T8 / 18W T8 / 20W T12 x 2
(bulb not included)



**24" Wraparound
RL-WA4AS**

Size: 24" x 12.5" x 2.2"
Bulb Type: 17W T8 / 18W T8 / 20W T12 x 4
(bulb not included)



**48" Wraparound
RL-WA2A**

Size: 24" x 6.5" x 2.2"
Bulb Type: 32W T8 / 34W T8 / 40W T12 x 2
(bulb not included)



**48" Wraparound
RL-WA4A**

Size: 48" x 12.5" x 2.2"
Bulb Type: 32W T8 / 34W T12 / 40W T12 x 4
(bulb not included)



USA & CANADA

1-800-445-6611

FAX WATS 1-800-445-6690

Visit us online at: www.lightingparts.com



PHOENIX, AZ

Phone: 602-268-0001

Fax: 602-268-0130

E-mail us at: customerservice@lightingparts.com

FLUORESCENT FIXTURES

UNDERCABINET LIGHTS

24" Undercabinet Light

RL-GL20F

Size: 24" x 6.5" x 2.2"

Bulb Type: 20W T8 Fluorescent Light Lamp



24" Undercabinet Light

RL-GL20B

Size: 24" x 6.5" x 2.2"

Bulb Type: 20W T8 Fluorescent Light Lamp



24" Wraparound

RL-GL20G

Size: 24" x 6.5" x 2.2"

Bulb Type: 20W T8 Fluorescent Light Lamp



PUFF FIXTURES

52" Puff Fixture

A. PL-PF2A

B. RL-PF4A

A) Size: 52" x 11" x 5"

Bulb Type: 32W T8 / 40W T12 x 2

B) Size: 52" x 11" x 5"

Bulb Type: 32W T8 / 40W T12 x 4



USA & CANADA

1-800-445-6611

FAX WATS 1-800-445-6690

Visit us online at: www.lightingparts.com

MILLER
©.E.M. SUPPLIES, INC.

PHOENIX, AZ

Phone: 602-268-0001

Fax: 602-268-0130

E-mail us at: customerservice@lightingparts.com

FLUORESCENT FIXTURES (UL & cUL listed)

White acrylic diffuser, completely wired with electronic ballast. Ready to direct wire over standard junction box. 120V 60hz AC, damp location. All fixtures meet ADA requirement for under 4" profile.

Mushroom

- A. MRLR001C - 11.5" 22W circline
- B. MRLR00P1 - 11.5" PL13W
- C. MRLR001P2 - 11.5" 2PL13W
- D. MRLR002C1 - 14" 32W circline
- E. MRLR002C2 - 14" 22W+32W circline
- F. MRLR002P2 - 14" 2PL13W
- G. MRLR002P3 - 14" 3PL13W
- H. MRLR003C2 - 19" 32W+40W circline



Low Profile 3"

Drum

- A. MRLV001C1 - 11" 22W circline
- B. MRLV001P1 - 11" PL13W
- C. MRLV001P2 - 11" 2PL13W
- D. MRLV002C1 - 14" 32W circline
- E. MRLV002C2 - 14" 22W+32W circline
- F. MRLV002P2 - 14" 2PL13W
- G. MRLV002P3 - 14" 3PL13W



Low Profile 3"

Square

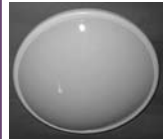
- A. MRLS001C1 - 12.5" 22W circline
- B. MRLS002C1 - 14.5" 32W
- C. MRLS003C2 - 14.5" 22W+32W circline
- D. MRLS004C2 - 19.5" 32W+40W circline



Low Profile 3"

Slimline

- A. MRLM001C1 - 13" 22W circline
- B. MRLM002C1 - 17" 32W
- C. MRLM002C2 - 17" 22W+32W circline
- D. MRLM003C2 - 21" 32W+40W circline



Low Profile 3"

CABINET LIGHTS

Cabinet Lights

- A. MUC12 - 8W, 12-1/4"L, 1-F8T5
- B. MUC21 - 13W, 21-1/4"L, 1-F13T5
- C. MUC24 - 16W, 24-1/2"L, 2-F8T5
- D. MUC33 - 21W, 33-1/2"L, 1-F8T5 + F13T5
- E. MUC42 - 26W, 42-1/2"L, 2-F13T5



Thin line under cabinet lights. Low profile only 1" deep. Width is only 5". Housing comes with 2 knockouts on each end as well as top and rear. Equipped with a high power factor-corrected, 120V electronic ballast which operates 60% cooler than a conventional preheat ballast. Comes with an electronic ballast power switch, and complete with lamp installed.

USA & CANADA

1-800-445-6611

FAX WATS 1-800-445-6690

Visit us online at: www.lightingparts.com



PHOENIX, AZ

Phone: 602-268-0001

Fax: 602-268-0130

E-mail us at: customerservice@lightingparts.com