

RAWHIDE SHADES & SOUTHWESTERN PHENOMENOL BRASS FINIAL SERIES

Shade Colors by Special Order!

Shades are hand made. Frames are galvanized steel and brass spider. Made from cow rawhide only. Standard color is amber with natural markings, also available in antique. To clean shades use only a damp cloth. Recommended use Max 60W for large shades 25W for smaller chandelier and sconce shades.

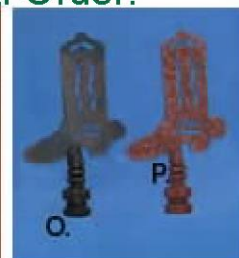
T=Top, B=Bottom, S=Slant

A. S301	T3 1/2	B-4"	S-4 1/4"
B. S301A	T2-1.V2	B-5"	S-4 1/8"
C. S302C	T2 1/2	B-5"	S-4 1/4"
D. S302M	T2 1/2"	B-5"	S-4 1/8"
E. S306	T-4"	B-8"	S-7 1/4"
F. S307	T-5"	B-9"	S-7 1/2"
G. S308	T-5"	B-8"	S-8"
H. Wall sconce shade S403		L-14"	W-6" D-6"
I. S309	T-5"	B-14"	S-11"
J. S310	T-6"	B-16"	S-11 1/2"
S311 (not shown)	T-6"	B-20"	S-12 1/2"
S312 (not shown)	T-6"	B-24"	S-13 3/4"

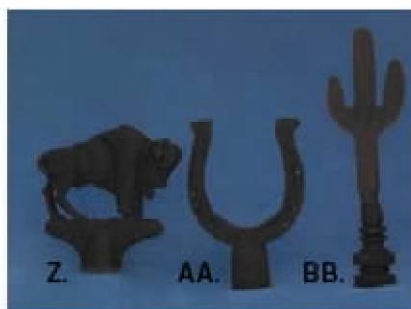
Other styles and shapes are available. Special requests or designs will be quoted. For colors add letter from legend to end of part number.

C=copper,R=Rust,VG=Verde Green,W=white, B=Brown,BL=Black

K. F95	L. F95
M. F94	N. F94
O. F92	P. F92
Q. F100	R. F94
S. F93	T. F91
U. F92	V. F95
W. F95	X. F99
Y. F103	Z. F97
AA. F96	BB. F93
CC. F105	DD. F99
EE. F101	



4 to 6 weeks leadtime on Raw Hide shades



USA & CANADA
1-800-445-6611
FAX WATS 1-800-445-6690
www.MillerLightingProducts.com



PHOENIX, AZ
Phone: 602-268-0001
Fax: 602-268-0130

customerservice@millerlightingproducts.com