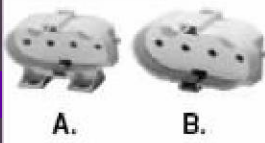


## COMPACT FLUORESCENT SOCKETS

For 2G11 Single-Ended Lamps

- A. EG360-70 (lateral or end mount)
- B. EG360-71 (end mount)  
660W-600V



## (NEW HARD TO FIND) SOCKETS

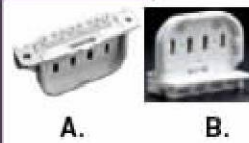
T2 Fluorescent Socket

- A. LB2660780 (screw mount)
- B. LB2660781 (snap-in)  
75W-250V



For Long Twin Tube for  
all 2G11 lamps

- A. EG286-SC B. L13452
- screw mounted, mounting holes 2  
1/2" C to C, white urea



2G8-1 High Wattage CFL Sockets

- LB2673410 (high wattage)
- for use with 60, 80, and  
120 watt CFLs



2GX7 Lampholder

(screw mount)

EG38913 - 13 watt



GRY10q-3 - (Lampholder)

- LB2673510 (snap-in)
- for CFLs, TC-DD, Double D,  
55W ONLY, 75W-600V



2G11 Locking Socket with  
release button

L108633 (snap-in)



EG1100VS

vertical snap-in or 2-hole mount



G4 Halogen Lampholder

- A. LB2526410 (rear contacts)
  - B. LB2526420 (side contacts)
- push wire contacts, cut-out 7.8mm,  
rating: 50V 2A

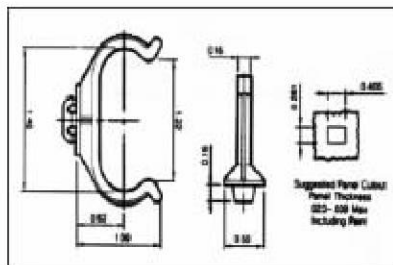


## SUPPORT CLIPS & ACCESSORIES

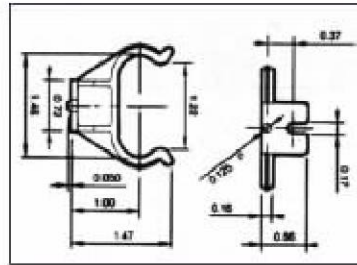
Additional Lamp Support Clips on Page 17

Support Clips for  
Long Twin  
Tube lamps

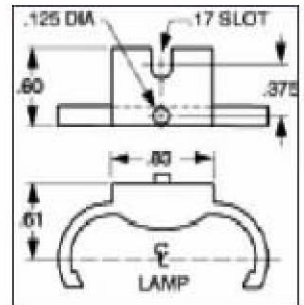
- A. L23452-A
- B. L23452-B
- C. EG787-2



A.



B.



C.

Stainless Steel 2G11  
Support Clips

- A. L23452MTS - Short Version
- B. L23452MTL - Tall Version



A.

B.

T5 & T-R5 Support Clip

MVS109685

16mm clip, use with T5 miniature,  
bi-pin & circline lamps.



EG357-60

For 2G11 lamps



2G11 LAMP SUPPORT

MVS108878

SNAP-IN FOOT



USA & CANADA

1-800-445-6611

FAX WATS 1-800-445-6690

www.MillerLightingProducts.com

**MILLER**  
ecoLIGHTING PRODUCTS

PHOENIX, AZ

Phone: 602-268-0001

Fax: 602-268-0130

customerservice@millerlightingproducts.com