

CRACKLE GLASS GLOBES

6" Diameter Globe 3-1/4" Fitter

- G237 - Crystal Clear - without bottom hole
- G237H - Crystal Clear - with bottom hole
- G239 - Amber - without bottom hole
- G239H - Amber - with bottom hole

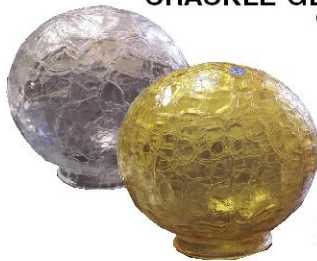
8" Diameter Globe 4" Fitter

- G241 - Frost - without hole
- G214 - Frost - without hole

note: G241 & G214 same product diff. factory

10" Diameter Globe 4" Fitter

- G245 - Frost - without hole



DORIC FLUTED BALL

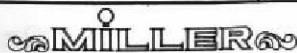
8" Ball - 4" Fitter
WITH 1/2" BOTTOM HOLE
G247 - Satin Opal

WITH 1/2" BOTTOM HOLE
G248 - Opal

Prestcut Globe

6" High - 6" Wide
3-1/4" Fitter

G258CRY
Crystal Clear



O.E.M. SUPPLIES, INC.
3812 N. 16th Street - Phoenix, Arizona 85016 - Phone (602) 248-0981

ACORN STREET LIGHTING GLOBES

The Actual Street Lighting Globe
Used by the Municipalities

G216F - Frosted

G216C - Clear

G216
Height - 19-3/8"
Fitter - 5-7/8"
Diameter - 13-1/2"



Made of heavy duty flippid cased glass
excellent light transmission
combines efficiency and durability

OLD SCHOOL HOUSE



G228 - 8-1/2" Diameter
with 4" Fitter
OPAL Glass

G233 - 12" Diameter
with 4" Fitter
OPAL Glass

G235 - 14" Diameter
with 6" Fitter
CLEAR Glass

G236 - 16" Diameter
with 6" Fitter
CLEAR Glass



School House Shade
FROSTED / ETCHED
4" FITTER

G217 - 8-1/2" Diameter



O.E.M. SUPPLIES, INC.
3812 N. 16th Street - Phoenix, Arizona 85016 - Phone (602) 248-0981